

AUGUST 2021



2021 – 2022

OFFICERS

PRESIDENT

Jacob Borchers, PE, PMP
316-263-6121
jacob.m.borchers@wsp.com

VICE PRESIDENT

Alex Lane, PE
316-788-6632
AlexLane@DerbyWeb.com

SECRETARY

Dakota Zimmerman, PE
316-221-3031
DGZimmerman@GarverUSA.com

TREASURER

Brent Chesnut, PE
316-247-6282
bchesnut@benesch.com

KSPE DIRECTOR

Mike Hoffman, PE
316-775-4632
mike@alansexcavating.com

2021 – 2022

EXECUTIVE BOARD

PAST PRESIDENT

Paul Garrett, PE
316-350-6682
ptgarrett@burnsmcd.com

Mike Hoffman, PE
316-775-4632
mike@alansexcavating.com

kansasengineer.org/Wichita

Wichita Society of Professional Engineers NEWSLETTER

President's Message

Hello All!

Welcome to the **2021-2022 WSPE year**. At the time I'm writing this, we're in the midst of a reprieve from the heat and are enjoying some cooler temperatures. Hopefully you all have a chance to get outside and enjoy it while it lasts before the heat returns!

Take a minute to check out the board members for this year, names and positions are listed off to the side of the page. I'd like to welcome Brent Chestnut to the board; he'll be serving as the Treasurer for the upcoming year. There are a couple people that are transitioning off the board that I'd like to thank for the years of service to the Society over the years. First is Shawn Mellies. Shawn has served in several roles over the years; working his way through the office positions, and most recently serving a number of years as our KSPE Director. Second is Jessica Slavik. Jessica also worked her way through the officer positions culminating in her role as Past President last year. Thank you both for your service and volunteering countless hours to serving your fellow engineers – your efforts are very much appreciated! Lastly, I'd like to extend a special 'Thank You' to last year's President Paul Garrett. Paul led WSPE through what can only be considered a crazy year that was 2020. His leadership was key to a successful year.

As we look forward, I cant believe it's August already! Where has the summer gone? Maybe it's just me, but it seems the summers get shorter and shorter every year. August is always a hectic and stressful time of the year; doing our best to beat the heat, cram one last road trip in before school starts, getting kids (and

President's Message (cont.)

parents) ready to start school. Throw on top of that the renewed push for infrastructure projects with KDOT now full-go on implementing the IKE Program and the proposed Infrastructure Bill at the Federal level; in addition to exciting projects in Wichita from the new water treatment plant and the new transit center downtown. There's no shortage of demands for our time and attention — so hopefully you're all finding a good way to step away from it all and relax and decompress. A good way to do that is with our monthly *Beers with Engineers*. We've got some exciting locations planned for this year — so stay tuned for more info on those.

As we look forward to the upcoming year, I'm excited about the speakers and topics we have lined up. I'm perhaps most excited about the opportunity to be able to return to in-person meetings and re-connect with so many of you. We've got a jam-packed schedule the first couple months starting with a Wind Surge baseball game later this month. September brings the return of BBQ Bingo and the Awards banquet. October is packed full of opportunities with our Legislative breakfast, the EFK Golf Tournament, the K-State Transportation Engineering Conference and the KDOT/ACEC Partnering Conference. Take a look at the Calendar of Events to stay up to date.

We're looking forward to seeing all of you soon!

Jacob Borchers, PE, PMP
WSPE President

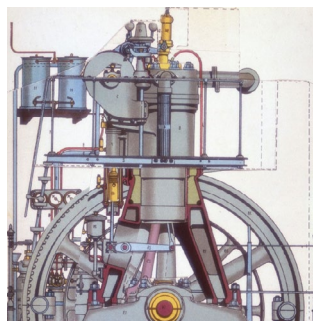
Celebrate Licensure and the Profession with PEs Around the World on August 4, 2021 for the sixth annual Professional Engineers Day!



On August 8, 1907, the first professional engineering license was issued to Charles Bellamy in Wyoming. Since that time, licensure has expanded and professional engineers across the U.S. have made the commitment to protect the public health, safety, and welfare. NSPE is celebrating licensed professional engineers with the sixth annual Professional Engineers Day on **Wednesday, August 4, 2021**. Join us as we raise awareness about what it means to be a PE, recognize licensed PEs, and show appreciation for the work they do each and every day.

This Day in Engineering History

August 9th, 1898 — Rudolf Diesel of France was granted patent Number 608,845 for an "internal combustion engine" known as the Diesel engine.



COMMITTEE CHAIRS

AWARDS/NOMINATING

Michelle Boehm, PE
316-682-2400
mboehm@cillesen.us

BUDGET

Brent Chesnut, PE
316-247-6282
bchesnut@benesch.com

ENGINEER'S WEEK

Rebecca Mellies, EIT
316-262-2691
Rebecca.Mellies@pec1.com

LEGISLATIVE

Adam Stodola, PE
316-264-8008
afstodola@garverusa.com

MATHCOUNTS

Jessica Rhein, PE
316-660-1848
jessica.rhein@sedgwick.gov

PUBLICATIONS

Dakota Zimmerman, PE
316-221-3031
DGZimmerman@GarverUSA.com

NEW PROFESSIONALS

Christina Holt
316-494-7517
cholt@scsengineers.com

BBQ BINGO

Scott Servis, PE
316-440-4304
sservis@baughmanco.com

MEMBERSHIP

Brad Shores, PE
316-213-6091
bshores@jeo.com

Recent Events



KSPE 2021 Annual Conference – Manhattan, KS

Wichita Construction Projects



Wichita Northwest Water Treatment Facility



KDOT Green Project

UPCOMING EVENTS

AUG
27
FRI

**Wind Surge Baseball Game
Construction Night**
**Limited to 30 tickets*

SEP
24
FRI

Awards Banquet

SEP
15
WED

KSPE Wichita PEG Seminar
Wichita, KS

OCT
1
FRI

EFK Golf Tournament

SEP
17
FRI

BBQ Bingo

OCT
7
THUR

Legislative Breakfast



***WSPE** has blocked off
30 tickets for this event.
 Be on the lookout for
 the event invite early
 next week.



CONSTRUCTION

NIGHT AT THE BALLPARK

CONSTRUCTION NIGHT ACTIVITIES

- 5:30 p.m. Gates Open
 Heavy Equipment Viewing
 Kids' Activities
- 7:05 p.m. First Pitch
- 9:30 p.m. Post-Game Fireworks

FRIDAY, AUGUST 27

Gates Open @ 5:30 p.m.

Join KCA and AGC of Kansas members from across the state for Construction Night at the Ballpark as the Wichita Wind Surge take on the Tulsa Drillers.

HOSTED BY



Chapter Business



TREASURER'S REPORT

The current checking account balance is:

\$6,600.15



FOLLOW US ON TWITTER

@WichitaPE
@KansasEngineer



FIND US ON FACEBOOK

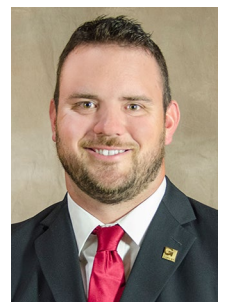
Wichita Society of Professional Engineers
Kansas Society of Professional Engineers



This e-newsletter is being distributed every month directly to the desktops of the members in our chapter. If you would like to see or add content for the next newsletter, feel free to email that information to me.

If you know your email is going to change (due to a new job or other), please let me know so that I can update our contact list.

If you are having problems with the e-newsletter or know someone that isn't receiving it, feel free to contact me.



Dakota Zimmerman
316-221-3031
DGZimmerman@GarverUSA.com

Photos have been collected from the internet. No copyright infringement is intended.

Sponsors

2021 - 2022

PLATINUM PARTNER SPONSORS

GOLD PARTNER SPONSORS

Bartlett & West

SILVER PARTNER SPONSORS



BRONZE PARTNER SPONSORS

PLEASE CONSIDER BECOMING A 2021-2022 KSPE ANNUAL PARTNER SPONSOR

To learn more about the program, [read a letter from the KSPE President](#), Brian Scovill, PE

[Click here for the application](#)



Mail back to the office: 825 S. Kansas Avenue, Suite 500, Topeka, KS 66612
or scan in and email to andrea@kansasengineer.org