



Monthly Newsletter

Volume 23 Issue 6

President's Message

By: Kurt Rotering

Looking back at Tony's President's Message from April 2020, we were just starting to understand the COVID pandemic and not knowing what the remainder of the year would look like. Now in April 2021 we know a lot more and can see the light at the end of the tunnel. Although we are still in the tunnel, many of us have or are in the process of being vaccinated, the cases of COVID are dropping in our area, and warmer weather and possibilities of being together again are upon us.

Another item of excitement this spring is the possibility of a long-needed large infrastructure bill that is being announced as I type. This bill, if it passes, will focus on roads, bridges, ports, rail, manufacturing, and telecom. Both KDOT and MoDOT are gearing up with identifying projects, so hopefully something can come from this push.

To finish out the 2020-2021 year for the Eastern Chapter of KSPE, we will still be virtual for our April and May meetings, and we hope to restart our annual Young Engineer's Summer BBQ, in-person, probably in July. Our April meeting will be a joint meeting with MSPE and SAME and include a Streetcar update from Tom Gerend. The May meeting will include a presentation from our Excellence in Transportation Award winner and the handover of the reins to our next President, Rachel!

KSPE's Annual Conference will be held in-person in Manhattan, KS in late June. If you want to visit the best college town in the area (go Cats), I hope to see many of you there! Be on the lookout for further announcements from KSPE on how to sign-up.

Another event I'm excited for is our upcoming service event! On April 23rd a group of us will be meeting off of 135th in Overland Park to enjoy the (hopefully) nice weather and help clean Tomahawk Creek! See the announcement in the Newsletter for more information and to RSVP.

In this Issue

President's Message (p.1-2)
Nomination Ballot (p. 3)
Upcoming Events (p. 4-5)

Annual Conference (p. 6)
Treasurer's Report (p. 7)
Meeting Minutes (p. 8-9)

Chapter Leadership (p. 10-11)
Professional Directory (p. 12-13)

President's Message Continued

Lastly, as we look forward, it is time to elect our 2021-2022 board members to lead us into the next year. Nominees and biographies are in the newsletter along with a link to vote online. Please vote and we look forward to bringing on our new officers!

I will close in a similar same way Tony did 1 year ago: As President of the Eastern Chapter of KSPE and as a fellow licensed engineer, I am wishing everyone a safe and healthy spring and look forward to the time when we can all get back together and celebrate our great profession. We are on the forefront, right now, of helping the national recovery from this pandemic.

Sincerely

Kurt

Kurt Rotering, P.E.



"KSPE is dedicated to promoting, protecting and advocating the success and integrity of the licensed Professional Engineer and Engineer Intern by delivering professional development products and services, encouraging licensure, and advocating legislation and public policy for the betterment of human welfare and the profession."

KSPE Officer Nomination Ballot

KSPE EASTERN CHAPTER 2021-2022 OFFICER NOMINATIONS

The Nominating Committee has nominated the following individuals for Eastern Chapter KSPE Officers for the 2021-2022 Year:

| | |
|---------------------------------------|------------------------------------|
| VICE PRESIDENT/PRESIDENT-ELECT | <i>Chad Hall, P.E.</i> |
| TREASURER | <i>Cody Porter, P.E.</i> |
| SECRETARY | <i>Jordan Herbert, P.E.</i> |

Please fill out the ballot located here: <https://www.surveymonkey.com/r/MSLKX7Z>

ONLY BALLOTS COMPLETED BEFORE MAY 1, 2021 CAN BE COUNTED

The following chairperson has been appointed and approved by the Board:

| | |
|---|--------------------------------------|
| MEMBERSHIP COMMITTEE CHAIRPERSON | <i>Robynn Andracsek, P.E.</i> |
|---|--------------------------------------|

Bios for the newly nominated officers / members of the board:

Jordan Herbert, P.E.

Jordan Herbert joined HNTB in 2011 as a transportation design engineer in the Overland Park office. He currently serves as a project manager whose primary responsibilities include delivery, design, and engineering of highway projects, including interchange design, roadway geometrics, modeling, maintenance of traffic, and traffic engineering. Jordan graduated from KU with a B.S. in Civil Engineering and from Rockhurst University with a M.B.A. with a management focus. Jordan also serves on the KU CEAE Young Alumni Advisory Board and has been a KSPE-EC member since 2012.

Robynn Andracsek, P.E.

A native Kansan, Robynn lives in Olathe with her husband and son (who will be starting in civil engineering at KU this fall). Robynn's degrees are from KU: BS Mechanical Engineering and MS Environmental Engineering. Robynn works at Burns & McDonnell in air permitting, helping industrial and utility clients comply with the Clean Air Act. Robynn is a PE in KS, MN, TX, and FL and frequently writes and speaks on air permitting and ethics. Robynn is active in STEM outreach and volunteering with the unhoused community.

The three people previously elected, and positions conferred to assume their offices for next year are:

| | |
|-----------------------|-------------------------------------|
| PRESIDENT | <i>Rachel Henkhaus, P.E.</i> |
| PAST PRESIDENT | <i>Kurt Rotering, P.E.</i> |
| STATE DIRECTOR | <i>Kurt Rotering, P.E.</i> |

KSPE April Meeting



ARE PROUD TO ORGANIZE A JOINT **APRIL PROGRAM**

**Please Join Us
For Our Monthly Meeting and Webinar**

**Topic
KC Streetcar Update**

Featured Speaker



Tom Gerend
Executive Director
Kansas City Streetcar Authority

Summary

Since public opening of the streetcar system on May 6th, 2016 the KC Streetcar system has carried over 5 million passenger trips, won numerous state and national awards, and has been credited with stimulating over \$2 billion in active economic development in downtown Kansas City. This session will provide an update on the KC Streetcar system today and how it is changing the way KC locals travel and spurs the City's economic development!

Thursday, April 22 | 12-1PM CST

SAME and Non-SAME Members: Free

Join on Teams: [Click here to join the meeting](#)

Or call in (audio only): +1 816-298-0271, 548278680#

Join the event to receive your PDH certificate



For More Information:

BRENT LEGREID
blegreid@burnsmcd.com
(816) 708-6182

CHRISTINA WOOLDRIDGE
wooldridge@bv.com
(913) 458-6480

KSPE Service Event

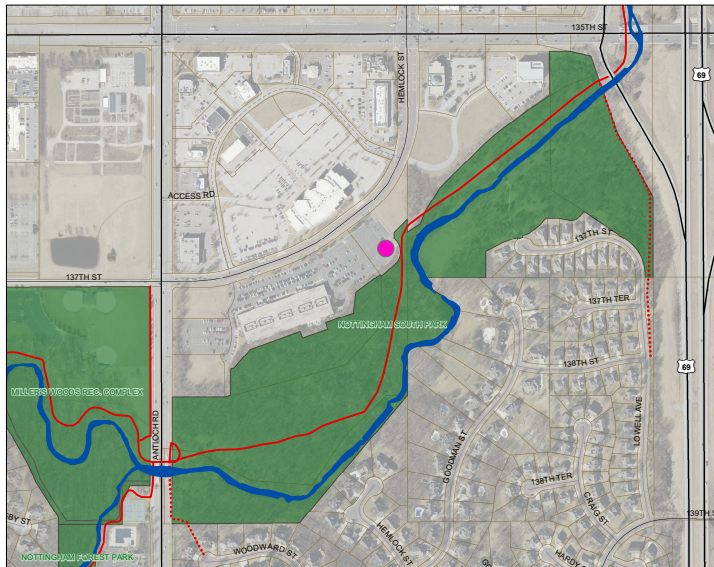
KSPE Stream Clean

Date: April 23rd

Time: 2:00-4:00

Location:

8501 W 137th Street
Overland Park, KS 66223
(Please park where pink dot is located)



RSVP: Please email Anne by **noon on April 21st**

aschroer@gbateam.com

Volunteers Should:

- Not get in the water itself but instead pick up trash and litter in the park up to the edge of the stream
- Wear long pants, a long sleeve shirt and closed toe shoes (no sandals)
- Be careful - no piece of litter is worth a risk of injury!
- Wear a mask if they are working with individuals other than those with whom they live
- Wear gloves
- Be aware of traffic on the trails

KSPE Annual Conference

NSPE-KS™ KANSAS SOCIETY OF
PROFESSIONAL ENGINEERS

2021 KSPE ANNUAL CONFERENCE June 23-25



Hilton Garden Inn

Manhattan, KS

Treasurers Report

March 2021



Kansas Society of Professional Engineers - Eastern Chapter Treasurer's Report: March 2021

Beginning Balances Date: March 1, 2021
Ending Balances Date: 3/31/2021

Checking Account

| | | | | |
|--------------------|--|----|-----------------|-----------------|
| Beginning Balance | | | \$ | 3,302.01 |
| <i>Deposits</i> | | | | |
| | KSPE Dues (Oct-Jan) | \$ | 720.00 | |
| | Advertising (Olsson) | \$ | 75.00 | |
| | KSPE Dues (Jan) | \$ | 249.00 | |
| | Checks (Pass Through for EFK Fundraising) | \$ | 100.00 | |
| | Total Deposits | \$ | 1,144.00 | |
| <i>Withdrawals</i> | | | | |
| | Check 1274 - Executive Secretary | \$ | 200.00 | |
| | Check 1275 - Check to EFK (Pass through for fundraising) | \$ | 100.00 | |
| | Total Withdrawals | \$ | 300.00 | |
| Ending Balance | | | \$ | 4,146.01 |

Savings Account

| | | | | |
|--------------------|--------------------------|----|-------------|------------------|
| Beginning Balance | | | \$ | 14,543.90 |
| <i>Deposits</i> | | | | |
| | Interest | \$ | 1.27 | |
| | Total Deposits | \$ | 1.27 | |
| <i>Withdrawals</i> | | | | |
| | None | \$ | - | |
| | Total Withdrawals | \$ | - | |
| Ending Balance | | | \$ | 14,545.17 |

Money Market

| | | | | |
|--------------------|--------------------------|----|-------------|-----------------|
| Beginning Balance | | | \$ | 5,593.85 |
| <i>Deposits</i> | | | | |
| | Interest | \$ | 0.04 | |
| | Total Deposits | \$ | 0.04 | |
| <i>Withdrawals</i> | | | | |
| | None | \$ | - | |
| | Total Withdrawals | \$ | - | |
| Ending Balance | | | \$ | 5,593.89 |

Cash on Hand

| | | | | |
|--------------------|--------------------------|----|----------|---------------|
| Beginning Balance | | | \$ | 100.00 |
| <i>Deposits</i> | | | | |
| | None | \$ | - | |
| | Total Deposits | \$ | - | |
| <i>Withdrawals</i> | | | | |
| | None | \$ | - | |
| | Total Withdrawals | \$ | - | |
| Ending Balance | | | \$ | 100.00 |

EFK Account

| | | | | |
|--------------------|--|----|---------------|-----------------|
| Beginning Balance | | | \$ | 9,630.90 |
| <i>Deposits</i> | | | | |
| | Check 1275 - Check to EFK (Pass through for fundraising) | \$ | 100.00 | |
| | Money from HNTB fundraising (Check mailed to EFK) | \$ | 150.00 | |
| | Total Deposits | \$ | 250.00 | |
| <i>Withdrawals</i> | | | | |
| | Total Withdrawals | \$ | - | |
| Ending Balance | | | \$ | 9,880.90 |

Chad D. Hall

Total \$ **34,265.97**

Chad D. Hall, AVP, PE, Treasurer KSPE EC
3/31/2021

KSPE March Meeting Minutes



BOD Meeting Minutes

Tuesday, March 23, 2021

Attendees

- Kurt Rotering
- Tony Rome
- Rachel Henkhaus
- Cody Porter
- Chad Hall
- Allison Bruner
- Anne Schroer
- Rod Holcomb
- Darren Meyer
- Derek Hopkins

Call to Order -----Rotering

Treasurer's Report ----- Hall

Officer Nominations -----Rotering

- Membership Director – Robynn Andracsek (Burns & McDonnell)
- Secretary – Jordan Herbert (HNTB)
- New State Director 2021-2023 – Kurt Rotering (will take over for 2 years)

Committee Reports:

- Awards ----- Allison Bruner
 - Nominations –
 - Engineering Achievement - Turner Diagonal
 - Intern Engineer – Darren Meyer
 - Vote - Allison Bruner will send out an email ballot to board
- Legislative -----Charlie Love
 - Note about Travis's emails about legislative
- MATHCOUNTS----- Rachel Henkhaus
 - Have trophies for top 10 winners that were announced in the newsletter. Rachel to coordinate drop off trophies
- Model Bridge Building----- Mark Johnston/Derek Hopkins
 - No update – is going to investigate a better loading system, might reach out to partner with a university.
- Fundraising----- Rod Holcomb
 - Waiting on one check – otherwise no update
- Membership -----Vacant
- Young Engineers ----- Darren Meyer
 - State wants to emphasize young engineer involvement
 - Thinking about a picnic in July timeframe
- Engineering Preparation----- Tawn Nugent
- Engineer's Week ----- Kurt Rotering
 - Complete, waiting on financial settling with MSPE
- Advertising ----- Kristen Leathers
- Community Service Project(s)----- Anne Schroer
 - Overland Park Stream Clean event coming up in April
- State Director-----Charlie Love
 - State conference planning to be an in-person event

The goal of KSPE is to promote, recognize, and enhance the engineering profession by delivering professional development products and services, encouraging licensure, and advocating legislation and public policy for the betterment of human welfare and the profession.

Meeting Minutes Continued



Chapter Meetings -----Henkhaus

- **March:** March Madness Bracket challenge
 - 10 members +/- filled one out
- **April (4/22 Lunch):** Joint meeting with MSPE/SAME – Tom Gerend – Streetcar
- **May:** Awards meeting
- **June:** Summer Picnic

Old/New Business -----Rotering

- Open forum
- Newsletter deadline – March 31st

The goal of KSPE is to promote, recognize, and enhance the engineering profession by delivering professional development products and services, encouraging licensure, and advocating legislation and public policy for the betterment of human welfare and the profession.

Chapter Leadership

Past President

Tony Rome, P.E.
City of Overland Park
8500 Santa Fe Drive
Overland Park, KS 66212
913-895-6001
913-895-5055 (Fax)
tony.rome@opkansas.org

President

Kurt Rotering, P.E.
Olsson
7301 W 133rd Street
Suite 200
Overland Park, KS 66213
913-381-1170
krotering@olsson.com

Vice President

Rachel Henkhaus, PhD, P.E.
Garver
7301 W 129th Street
Suite 330
Overland Park, KS 66213
816-298-6465
REHenkhaus@GarverUSA.com

Treasurer

Chad Hall, P.E.
HDR Engineering
10450 Holmes RD Suite 600
Kansas City, MO 64131
816-360-2731
chad.hall@hdrinc.com

Secretary

Cody Porter, P.E.
Wilson & Co
800 E 101st Ter, Suite 200
Kansas City, MO 64131
816-701-3100
cody.porter@wilsonco.com

State Director

Charlie Love, P.E.
City of Lenexa
7700 Cottonwood
Lenexa, KS 66216
913-477-7660
clove@lenexa.com

Model Bridge

Derek Hopkins, P.E.
Transystems
2400 E Pershing Road
Suite 400
Kansas City, MO 64108
816-329-8600
dlhopkins@transystems.com

MathCounts

Rachel Henkhaus, PhD, P.E.
Garver
7301 W 129th Street
Suite 330
Overland Park, KS 66213
816-298-6465
REHenkhaus@GarverUSA.com

Awards

Allison Bruner, P.E.
TREKK
1411E 104th Street
Kansas City, MO 64131
816-874-4655
abruner@trekkdesigngroup.com

Chapter Leadership

Membership

Vacant

Fundraising

Rodney M. Holcomb, S.E.,P.E.
Burns & McDonnell
9400 Ward Parkway
Kansas City, MO 64114
816-349-6693
rholcomb@burnsmcd.com

Engineering Preparation

Tawn Nugent, P.E.
TREKK Design Group
1411 E 104th Street
Kansas City, MO 64131
816-877-8684
Tnugent@trekkdesigngroup.com

Advertising

Kristen Leathers, P.E.
Affinis Corporation
7401 West 129th Street,
Suite 110
Overland Park, KS 66213
913-239-1122
kleathers@affinis.us

Community Service

Anne Schroer, P.E.
GBA
One Renner Ridge
9801 Renner Boulevard
Lenexa, KS 66219-9745
913-577-8257
aschroer@gbateam.com

Executive Secretary

Nicolle Downing
jaindowning@gmail.com
816-294-9563

Young Engineers

Darren Meyer
Wilson & Co
800 E 101st Terrace
Suite 200
Kansas City, MO 64131
816-701-3100
darren.meyer@wilsonco.com

Professional Directory



2019 Garver Chain Reaction Challenge
 Lee A. Tolbert Community Academy, Kansas City, MO



We're invested
 in Kansas City.

Garver is encouraging the next generation of engineers in Kansas City. Learn how at GarverUSA.com/GarverGives.



innovative leader
 trusted partner

913-829-8650 • www.poolefire.com

Comprehensive Fire Protection and Life Safety Solutions since 1991



- Fire Protection Engineering
- Life Safety
- Code Consulting
- Risk Assessments
- Legal Testimony
- Performance-based Solutions



19910 W. 161st Street • Olathe, Kansas 66062

LOCAL SERVICE. NATIONAL EXPERIENCE.



- Civil Engineering
- Traffic, ITS, & Transportation Planning
- Transportation Engineering
- Water Resources Engineering
- Structural Engineering
- Diagnostics
- Technology

816.701.2100
walterpmoore.com

KTA-East Topeka



KTA-Southern Terminal



KTA-Eastern Terminal



100+ YEARS OF INFRASTRUCTURE SOLUTIONS



KANSAS
 7400 W. 129th St., Ste. 100
 Overland Park, Kansas 66213
 913.491.9333

MISSOURI
 715 Kirk Drive
 Kansas City, Missouri 64105
 816.472.1201

WWW.HNTB.COM



913-239-1100
www.affinis.us

Professional Directory



Improving our world
 one project at a time.



TREKK
 DESIGN GROUP, LLC

Tawn Nugent, PE, DBIA
 Associate Partner | Transportation
 1411 E 104th Street
 Kansas City, MO 64131
 (816) 874-4655 office
 (816) 506-1017 mobile
 tnugent@trekkdesigngroup.com

www.trekkdesigngroup.com

olsson[®]

An engineering and design firm with purpose.

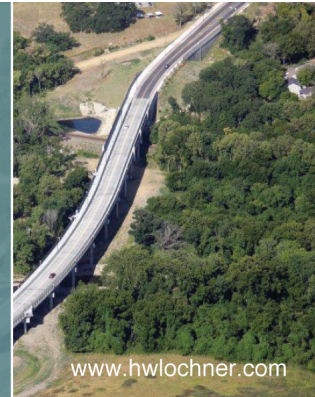
olsson.com

LOCHNER
 Innovative Solutions

- Civil/Structural Engineers
- Airport Engineers/Planners
- Environmental Scientists
- Design-Build Services

With 39 offices nationwide, we're ready to serve you

Lenexa Office 816.945.5840



WILSON & COMPANY

Wilson & Company, Inc., Engineers & Architects
 800 East 101st Terrace, Suite 200
 Kansas City, MO 64131
 816 701 3100 (office)
 info@wilsonco.com
 wilsonco.com

GBA[®]

Learn more at GBAteam.com